

## General Purpose Enclosed Brush Model

Designed for reliable output in adverse environments. Enclosed brush/slip ring cavity protects brush and slip ring system from dust and dirt to prolong brush and rotor life. Dynamically balanced rotor, oversized bearings and rugged construction provide long service life. Recommended for industrial, construction, and agricultural applications with moderate levels of dust and dirt. Available with optional chaff screen as shown.

## Features and Benefits

- Heavy-duty copper stator windings for higher output and cooler operation.
- Longer copper graphite brushes, for longer service life between brush changes.
- Permanently-lubricated and sealed ball bearings.
- Housing can be indexed 90 degree intervals for applications versatility.
- Heavy-duty cast aluminum housing.
- Operating ambient temperature range -40° F to +200° F
- Negative ground configuration.
- Integral regulator and rectifier.
- Max. continuous operating speed 8,000 RPM.
- Operating rotation: Bi-directional
- Fans: CW fan supplied, optional CCW and bi-directional fans available.

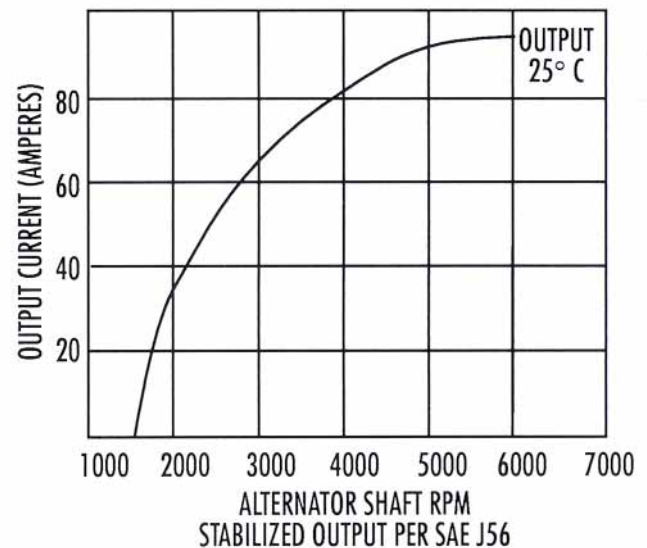
## Options

Models available with metric mounting and electrical connections. Available with stud terminal only.

Sales Number  
110-244

**8MR2035T**

12 Volt 90 Amp

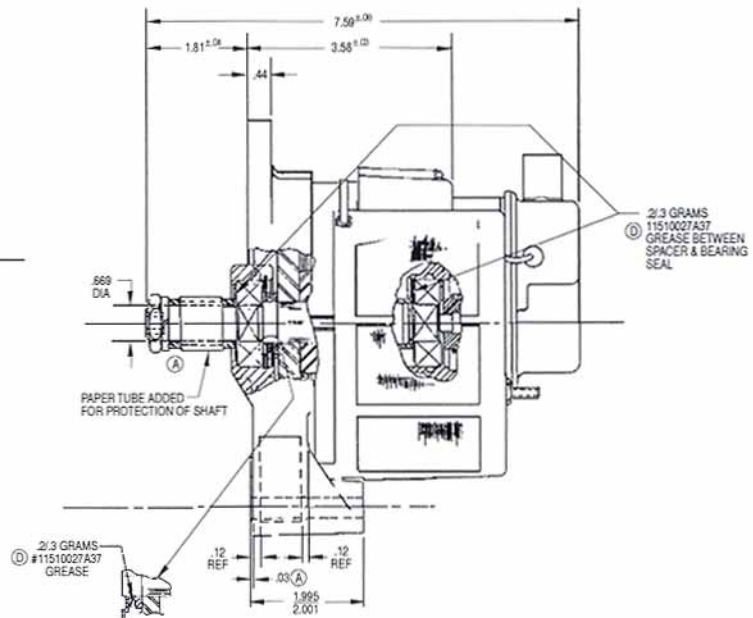
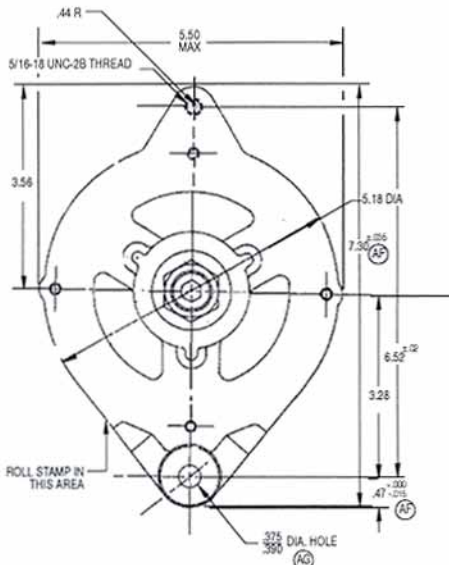


## Output

RPM	Amps
1,600	10
2,000	32
3,000	62
4,000	82
5,000	91

**Dimensions**

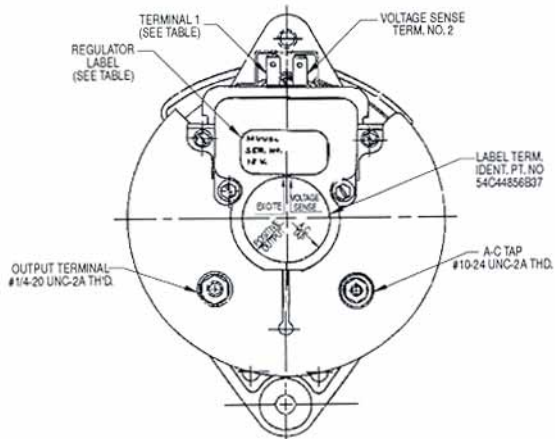
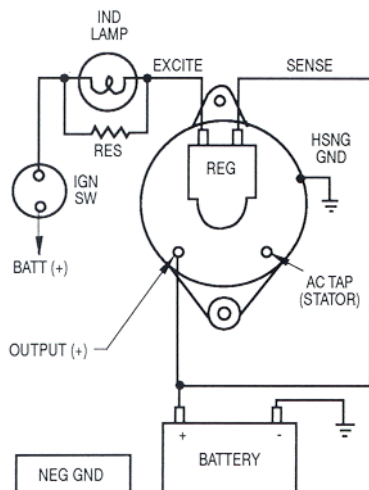
**8MR2035T**



**Terminations**

- AC Taps - (1) 10-24
- Ind. Lamp - spade lug
- Remote Sense - spade lug terminal
- B+ - 1/4-20

**Wiring Diagram**



**Ground and Battery Cable**

Size	Feet
4	0 - 10
0	10 - 25

Manufacturing and OE Sales  
Leece-Neville Heavy Duty Systems  
400 Main St.  
Arcade, NY 14009  
(716)-492-1700  
Fax: (716)-492-1660

**QS 9000 Certified**  
www.prestolite.com

Aftermarket Sales Leece-Neville  
7585 Empire Dr.  
Florence, KY 41042  
800-354-0560  
Fax: 800-997-6202