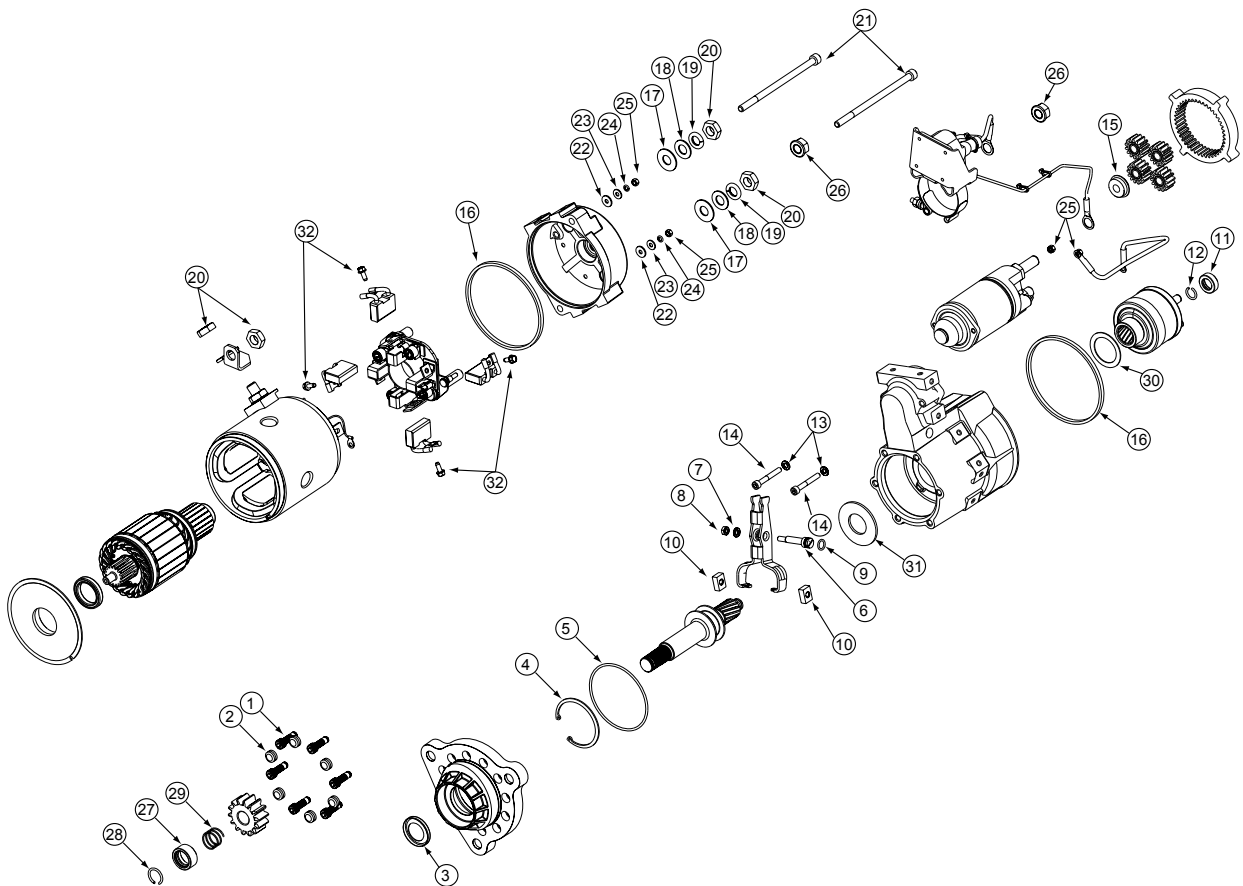


Source: Leece-Neville Heavy Duty Systems Division - Arcade, NY USA
Date: February 15, 2011
Bulletin No: TSB-3023
Models: M125R Noseless Starter Motor
Subject: Hardware kit for M125R Noseless starter motors K212105975S



Important: The information contained in this bulletin is intended for use by trained, professional technicians who have the proper tools, equipment, and training to perform the required maintenance described above. This information is NOT intended for 'do-it-yourselfers', and you should not assume that this information applies to your equipment. If you have any questions regarding this information please visit our website at www.prestolite.com, or contact our technical service department at:

Date: February 15, 2011

Bulletin No: TSB-3023

Note: All of thses components are part of the hardware kit and not available for individual purchase.

Description	QTY	Key	Where used
SCREW 5/16-18	6	1	Mounts flange to shift hsg
PLUG,SEALING	6	2	Flange sealing plug
Seal Flange Hsg	1	3	Flange hsg seal
Retaining Ring	1	4	Flange bearing retaining ring
O-ring	1	5	Flange O-ring
Pivot Bolt	1	6	Shift lever bolt
Washer,lock	1	7	Shift lever bolt lock washer
Nut, M6	1	8	Shift lever bolt nut
O-ring	1	9	Shift lever bolt o-ring
Cam,Lever Arm	2	10	Shift Lever Cams
Retainer,Drive	1	11	Drive Retainer
Snap Ring	1	12	Drive Retainer Snap Ring
M6 Lockwasher	2	13	Solenoid mtn hardware
Screw M6	2	14	Solenoid mtn hardware
Thrust Spacer	1	15	Gear Box Spacer
Rubber Seal	2	16	Field & Frame Seal
Washer, Insulating	2	17	Negative insulating washer
Plain Washer 1/2	2	18	Negative hardware
Washer,Lock 1/2	2	19	Negative hardware
Nut 1/2 Jam	4	20	Negative/ Motor Strap Hardware
Bolt	2	21	Through Bolts
Washer,Insulating	2	22	Brush holder attachment hardware
Washer #10	2	23	Brush holder attachment hardware
Washer, Lock #10	4	24	Brush holder attachment hardware
Nut hex, M5	4	25	Brush holder attachment hardware
Nut, 1/2 Flange	2	26	Pos & Neg Nuts
Pinion Retainer	1	27	Holds pinion to shaft
Snap Ring	1	28	Holds pinion to shaft
Engagement Spring	1	29	Pinion Spring
Thrust Washer	1	30	Clutch thrust washer
Brake Washer	1	31	Clutch brake washer
Screw M5	4	32	Brush Screws

Important: The information contained in this bulletin is intended for use by trained, professional technicians who have the proper tools, equipment, and training to perform the required maintenance described above. This information is NOT intended for 'do-it-yourselfers', and you should not assume that this information applies to your equipment. If you have any questions regarding this information please visit our website at www.prestolite.com, or contact our technical service department at: