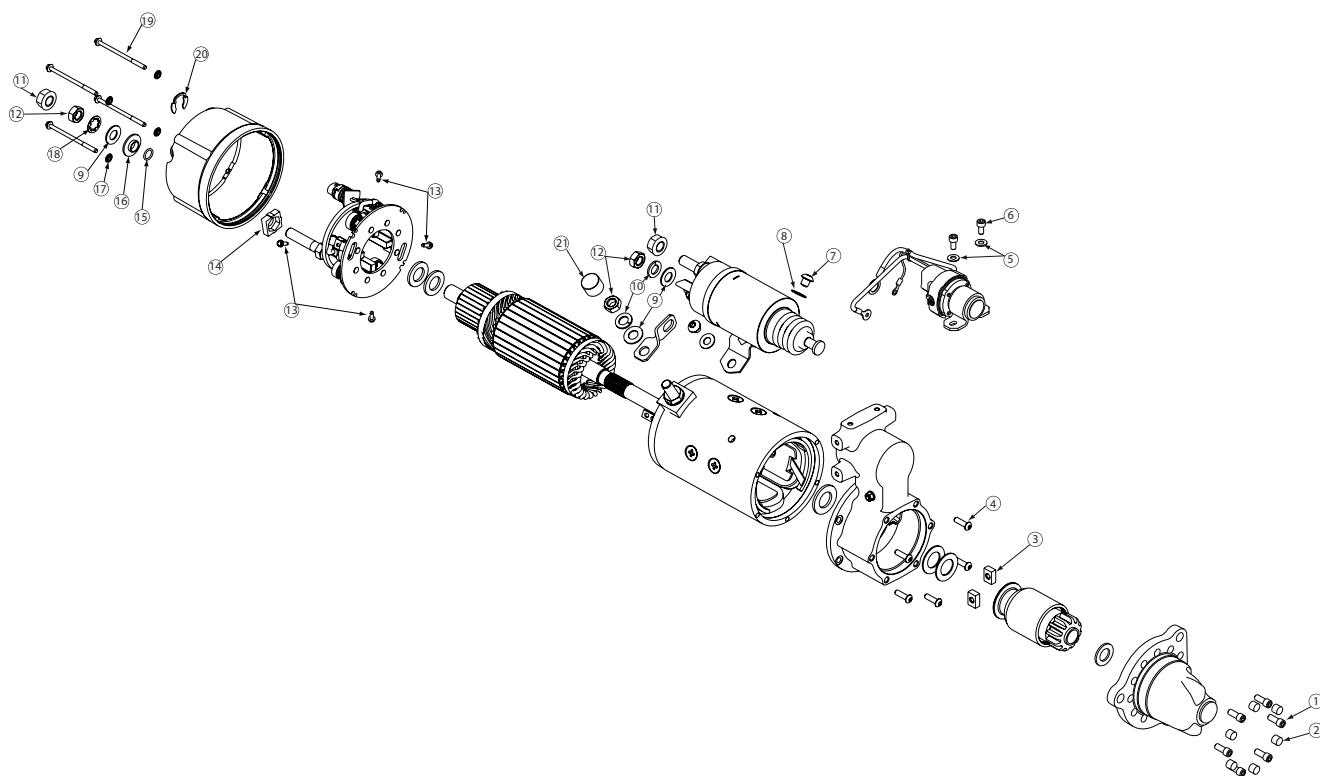


Source: Leece-Neville Heavy Duty Systems Division - Arcade, NY USA
Date: October 23, 2008
Bulletin No: TSB-3017
Models: M130 Starter Motor
Subject: Hardware kit for M130 starter motors



Important: The information contained in this bulletin is intended for use by trained, professional technicians who have the proper tools, equipment, and training to perform the required maintenance described above. This information is NOT intended for 'do-it-yourselfers', and you should not assume that this information applies to your equipment. If you have any questions regarding this information please visit our website at www.prestolite.com, or contact our technical service department at:

Date: October 23, 2008

Bulletin No: TSB-3017

Note: All of these components are part of the hardware kit and not available for individual purchase.

Description	Qty.	Key	Where used
Screw, Socket Head	6	1	Holds nose housing to shift lever housing
Rubber Plugs	6	2	Nose Housing Rubber Plugs
Cam, Lever Arm	2	3	Engages drive
Screw, Button Head	5	4	Holds shift lever assy to motor assy
Washer, Flat	2	5	Hardware to attach helper relay to shift lever assy
Screw, Socket Head	2	6	Hardware to attach helper relay to shift lever assy
Screw, Button Head	2	7	Hardware to attach solenoid to motor assy
Washer, Flat	2	8	Hardware to attach solenoid to motor assy
Washer, Flat	3	9	Jumper Hardware
Washer, Lock	2	10	Jumper Hardware
Con Nut	2	11	Attach Negative and Positive cables to starter
Nut, Hex	3	12	Jumper/ negative stud hardware
Screw, tap	4	13	Brush attachment screws
Insulator	1	14	Negative stud insulator (Internal)
O-ring	1	15	Negative stud O-ring
Insulator	1	16	Negative stud insulator (External)
Washer sealing	4	17	CE Assy sealing washer
Lock Washer	1	18	Negative stud star lock washer
Bolt, Hex Wash	4	19	CE Assy mounting bolts
Ring, Retaining	1	20	OCP mounting clip
Vinyl Cap	1	21	Protects pos motor stud

Important: The information contained in this bulletin is intended for use by trained, professional technicians who have the proper tools, equipment, and training to perform the required maintenance described above. This information is NOT intended for 'do-it-yourselfers', and you should not assume that this information applies to your equipment. If you have any questions regarding this information please visit our website at www.prestolite.com, or contact our technical service department at: