

Source: Leece-Neville Heavy Duty Systems Division - Arcade, NY USA
 Date: JULY 7, 2017
 Bulletin No: TSB-1111
 Models: M125R 24V Starters
 Subject: Wiring/ Terminal Identification

TSB will explain the terminal identifications and locations compared to a Leece Neville MS2 or Delco 42MT/ 50MT starters.

IMPORTANT
 Multiple Starter Applications
 Please refer to TSB-1115 for
 proper wiring.

Note:
 Relay is part of the starter soft start feature. Under any circumstances this relay should not be removed from the starter.

Severe damage to the starter will be the result.

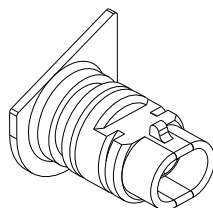
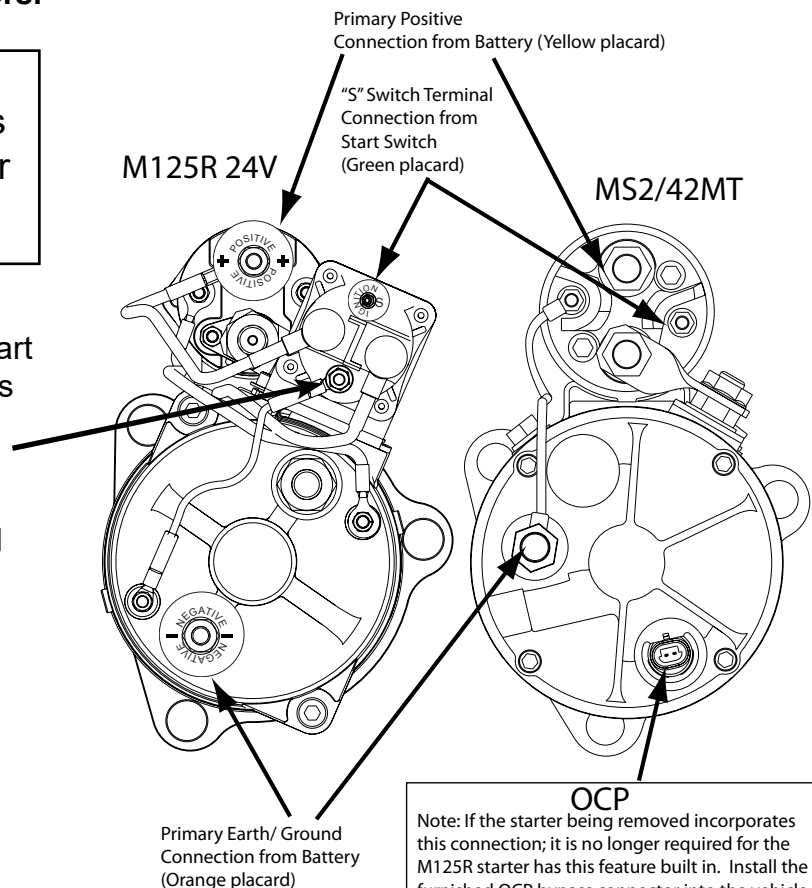


Fig 1
 M264105399S
 OCP Bypass Connector



OCP
 Note: If the starter being removed incorporates this connection; it is no longer required for the M125R starter has this feature built in. Install the furnished OCP bypass connector into the vehicle connector to properly bypass this circuit.
 M264105399S OCP bypass connector shown in Fig 1.

Note: Each TITAN™ M125R starter is now fitted with terminal placards to help identify these terminals. Upon making each connection to this starter remove and discard each placard.

NOTE: For starter motor safety precautions please reference TSB-1166.

Important: The information contained in this bulletin is intended for use by trained, professional technicians who have the proper tools, equipment, and training to perform the required maintenance described above. This information is NOT intended for 'do-it-yourselfers'; and you should not assume that this information applies to your equipment. If you have any questions regarding this information please visit our website at www.prestolite.com, or contact our technical service department at: