
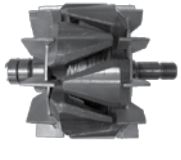




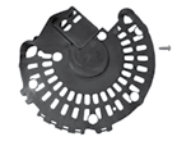





Group:	AVI160	Notes: Refer to SP1027-DWG for major component drawing. Refer to TSB-3022 for hardware kit breakdown.
Form:	SP1027-AVI160	
Date:	May 23, 2018	
File:	Alternator Parts List Section	



Component View	Front Housing & bearing,	Rotor	Rear Housing & O-ring	Stator	Rectifier
					
<b>Model</b>	<b>1</b>	<b>2</b>	<b>3</b>	<b>4</b>	<b>5</b>
Sales: A160201 AVI160T2001	A014105150S	A020105153S	A011105003S	A023105017S	A051105032S
Sales: A160202 AVI160T2002	A014105150S	A020105153S	A011105003S	A023105017S	A051105032S
AVI160T2002N	A014105150S	A020105153S	A011105003S	A023105017S	A051105032S

Component View	Regulator	Cover Kit	Pulley Spacer	Hardware Kit	Mounting Bolts
					
<b>Model</b>	<b>6</b>	<b>7</b>	<b>8</b>	<b>9</b>	<b>10</b>
Sales: A160201 AVI160T2001	R007520269S	A038520427S	Z032520348S	K212105665S	K069105591S
Sales: A160202 AVI160T2002	R007520270S	A038520427S	Z032520348S	K212105665S	K069105591S
AVI160T2002N	R007520270S	A038520427S	Z032520348S	K212105665S	K069105591S

\* Included with A160201-1 (AVI160T2001-1) and A160202-2 (AVI160T2002-2)  
 \*\* Included with A160202-2 (AVI160T2002-2)  
 \*\*\* Included with A160203-3 (AVI160T2002-3)

Important: The information contained in this bulletin is intended for use by trained, professional technicians who have the proper tools, equipment, and training to perform the required maintenance described above. This information is NOT intended for 'do-it-yourselfers', and you should not assume that this information applies to your equipment. If you have any questions regarding this information please visit our website at [www.prestolite.com](http://www.prestolite.com), or contact our technical service department at:

Group:	AVI160	Notes: Refer to SP1027-DWG for major component drawing. Refer to TSB-3022 for hardware kit breakdown.
Form:	SP1027-AVI160	
Date:	May 23, 2018	
File:	Alternator Parts List Section	

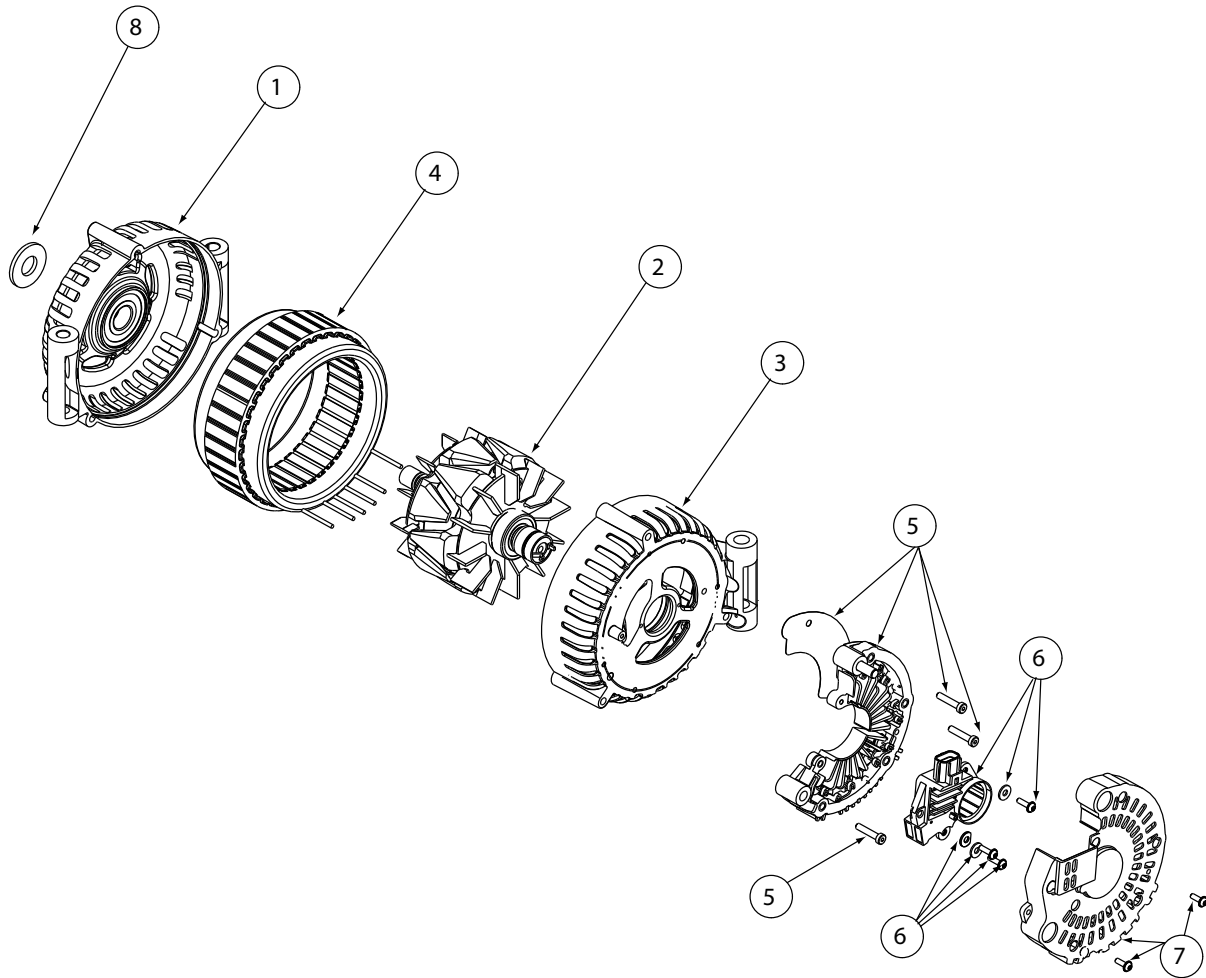
Component View	Adaptor Plug	CityStar / LCF Mounting Kit
	 **	 ***
<b>Model</b>	11	12
Sales: A160201 AVI160T2001	N/A	N/A
Sales: A160202 AVI160T2002	R175520322S	K069105628S
AVI160T2002N	R175520322S	N/A

\* Included with A160201-1 (AVI160T2001-1) and A160202-2 (AVI160T2002-2)  
 \*\* Included with A160202-2 (AVI160T2002-2)  
 \*\*\* Included with A160203-3 (AVI160T2002-3)

Important: The information contained in this bulletin is intended for use by trained, professional technicians who have the proper tools, equipment, and training to perform the required maintenance described above. This information is NOT intended for 'do-it-yourselfers'; and you should not assume that this information applies to your equipment. If you have any questions regarding this information please visit our website at [www.prestolite.com](http://www.prestolite.com), or contact our technical service department at:

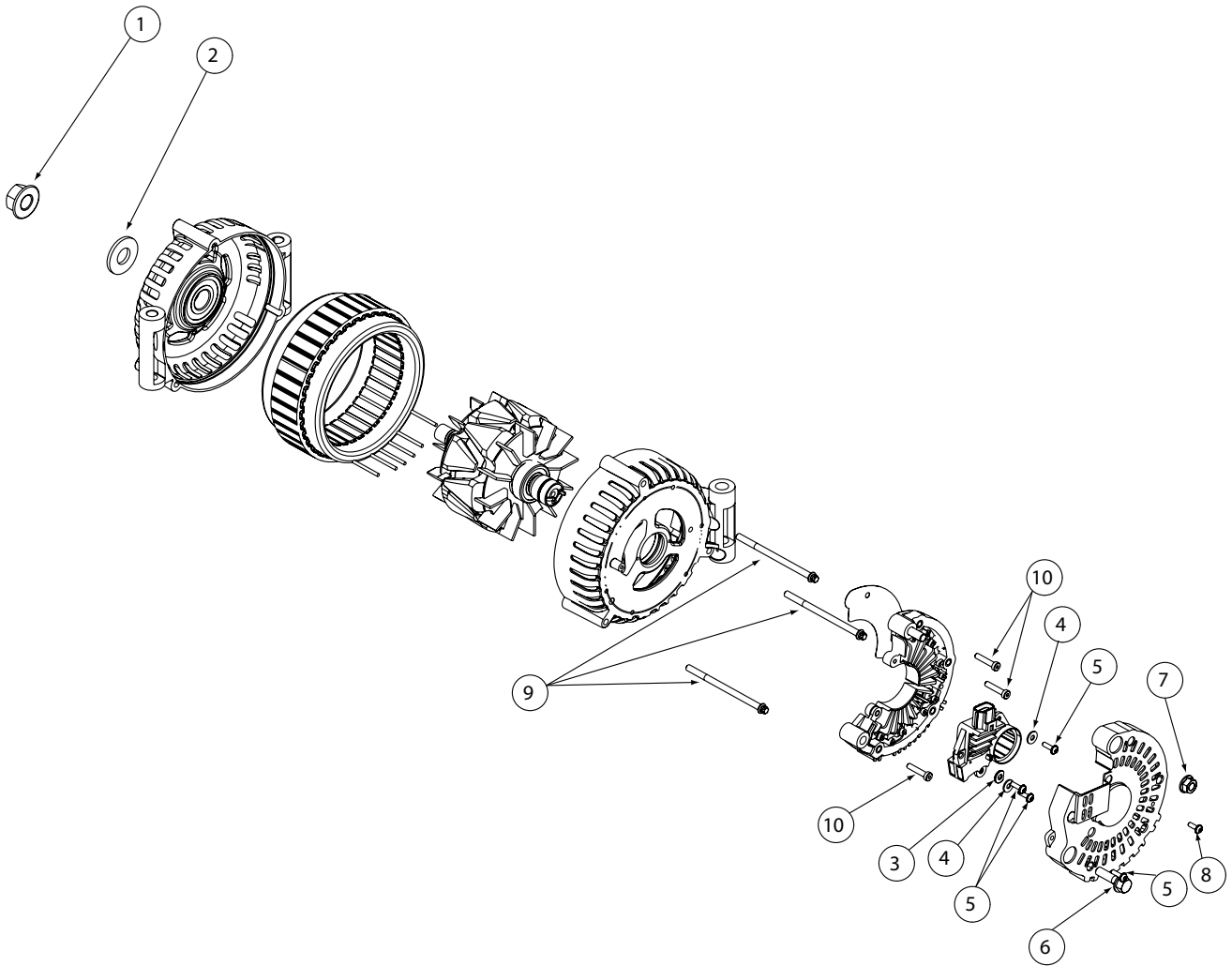
Group:	AVI160T	Notes: Refer to SP1027-AVI 160T for parts breakdown. Refer to TSB-3022 for hardware kit breakdown.
Form:	SP1027-DWG	
Date:	July 7, 2017	
File:	Alternator Parts List Section	

AVI 160T Major Service Components



Important: The information contained in this bulletin is intended for use by trained, professional technicians who have the proper tools, equipment, and training to perform the required maintenance described above. This information is NOT intended for 'do-it-yourselfers', and you should not assume that this information applies to your equipment. If you have any questions regarding this information please visit our website at [www.prestolite.com](http://www.prestolite.com), or contact our technical service department at:

Source: Leece-Neville Heavy Duty Systems Division - Arcade, NY USA  
Date: July 7, 2017  
Bulletin No: TSB-3022  
Models: AVI160T2001, AVI160T2002  
Subject: Hardware Kit for AVI160T-Series Alternators K212105665S



Important: The information contained in this bulletin is intended for use by trained, professional technicians who have the proper tools, equipment, and training to perform the required maintenance described above. This information is NOT intended for 'do-it-yourselfers'; and you should not assume that this information applies to your equipment. If you have any questions regarding this information please visit our website at [www.prestolite.com](http://www.prestolite.com), or contact our technical service department at:

Date: July 7, 2017  
Bulletin No: TSB-3022

Key number	Qty	Description	Where used
1	1	Pulley nut	Attaches pulley to alternator
2	1	Spacer	Pulley Spacer
3	1	Washer, flat D	Regulator attaching hardware
4	2	Washer, flat #10	Regulator attaching hardware
5	4	Screw, M4	Regulator/ Rear cover attaching hardware
6	1	Bolt M8	Negative bolt
7	1	Nut M8	Positive stud nut
8	1	Screw M4	Rear cover attaching hardware
9	3	T-Bolts M6	Through bolts
10	4	Screw M5	Rectifier attaching screws

Important: The information contained in this bulletin is intended for use by trained, professional technicians who have the proper tools, equipment, and training to perform the required maintenance described above. This information is NOT intended for 'do-it-yourselfers', and you should not assume that this information applies to your equipment. If you have any questions regarding this information please visit our website at [www.prestolite.com](http://www.prestolite.com), or contact our technical service department at: