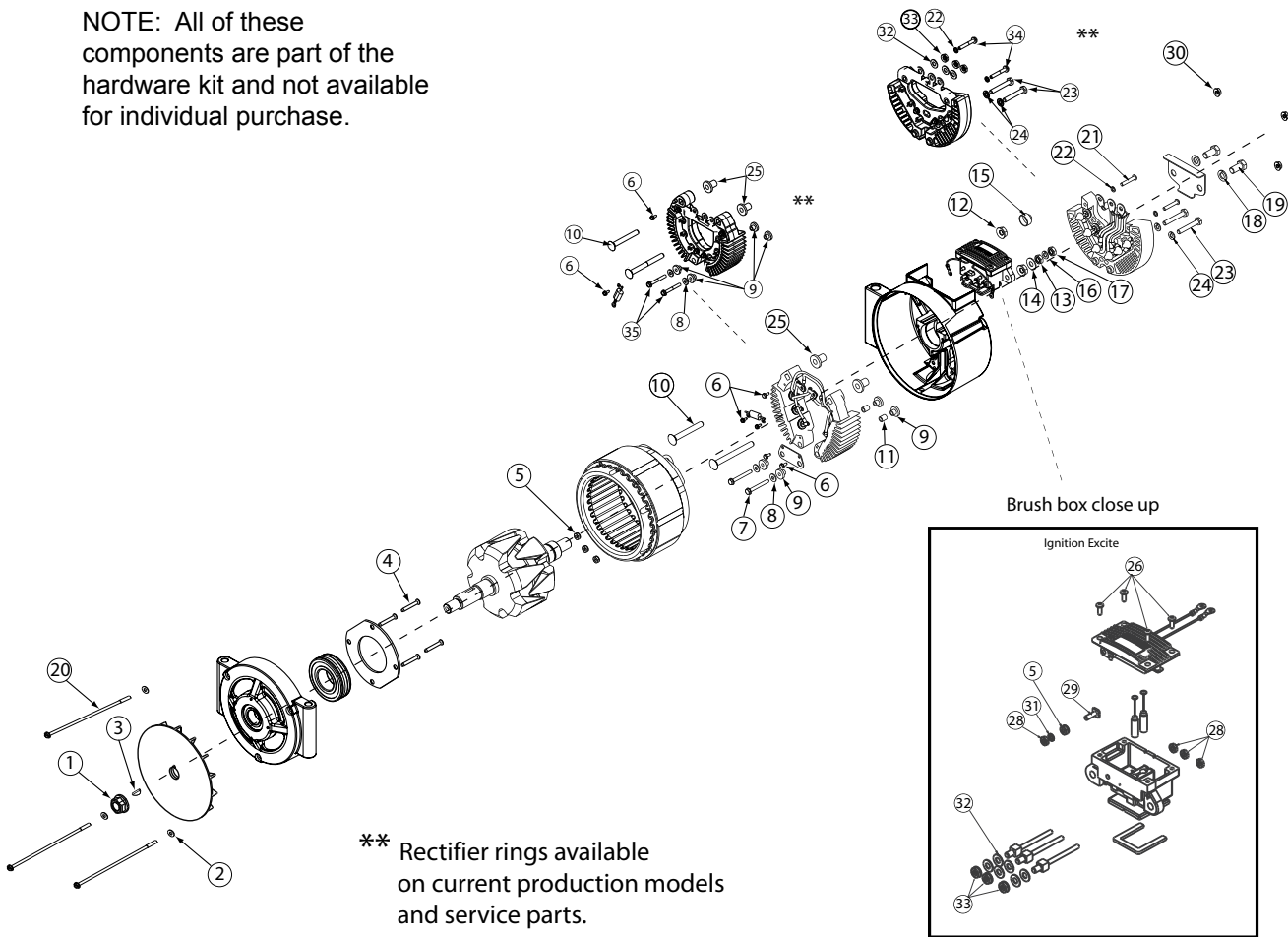


Source: Leece-Neville Heavy Duty Systems Division - Arcade, NY USA
 Date: February 7, 2008
 Bulletin No: TSB-3007
 Models: 4000 Series T-mount
 Subject: Hardware Kit for 4000 series T-mount alternators K212104769S for units with regulator.

K212104769S

NOTE: All of these components are part of the hardware kit and not available for individual purchase.



Important: The information contained in this bulletin is intended for use by trained, professional technicians who have the proper tools, equipment, and training to perform the required maintenance described above. This information is NOT intended for 'do-it-yourselfers', and you should not assume that this information applies to your equipment. If you have any questions regarding this information please visit our website at www.prestolite.com, or contact our technical service department at:

Date: February 7, 2008

Bulletin No: TSB-3007

4000 Series T-Mount series Hardware (with regulator and rectifier) - K212104769S

Description	Qty.	Key	Where used
NUT, 5/8-18, LOCK	1	1	Pulley Nut
WASHER, FLAT#10	3	2	Thru-Bolt flat washer
KEY, WOODRUFF #8	1	3	Shaft key
SCREW, THREAD FORMING	4	4	Front housing retainer plate holding screw
NUT	4	5	Internal stator nuts to AC-taps
SCR TPG 6-32x11/32phw	5	6	Internal Positive Rectifier connector plate screw
#10 HEX/W SHR. Hd. Scr.	2	7	Hex screw for internal Rect. Jumper plate
WASHER FLT.203-.500-.0	2	8	Flat washer on internal rectifier connector plate screws
BUSHING , INS.	4	9	Insulates rectifier ring from rear housing
BOLT 5/16 x 2-1/2"	1	10	Positive post bolt, short side with clear cap, no connect
BUSHING, INSULATION	2	11	Cardboard insulator for internal bolt insulation
NUT, TENZ -5/16-18	2	12	Con. Nut for positive post
NUT,HEX 5/16-18	1	13	External positive post nut, lower
WASHER 5/16"	1	14	External positive post flat washer
STUD COVER	1	15	Used to cover positive post bolt externally that is not used.
WASHER LCK	1	16	External positive post lockwasher
NUT	1	17	External positive post nut, top
LOCKWASHER 3/8"	2	18	Lockwasher used on negative bolts externally
BOLT- 3/8" x 3/4"	2	19	External negative Bolts, holds negative plate
THRU.BOLT #10-32	3	20	Thru-Bolts holds Alternator together
SCREW	2	21	External negative rectifier flat head screws
LOCKWASHER #10	2	22	Used on screws in negative external rectifier
SCREW	2	23	External negative rectifier hold down bolts
LOCKWASHER 1/4"	2	24	Lockwasher on external negative rectifier bolts/ Hold down bolts
BUSHING , INS.	2	25	White internal post insulator
SCREW	4	26	Regulator screws for internal dome top regulator
SCREW	4	26	Regulator screws for internal flat top regulator
NUT,STEEL #10-32	4	28	Holds AC taps in brush box and ign terminal
SCREW	1	29	Square headed screw used on brush box
NUT, #10-32 FLANGE LOCK	3	30	Thru-Bolt Nut
LOCKWASHER #10	1	31	Used on brush box, IGN term.
WSHR FLT .266-.562-	6	32	Flat washer for brush box AC-Taps
NUT	3	33	Ac Tap Con Nuts
SCREW #10 X 1 1/4"	2	34	Holds negative rectifier to rear housing
SCREW #10 X 1 1/2"	2	35	Holds positive rectifier to rear housing

Important: The information contained in this bulletin is intended for use by trained, professional technicians who have the proper tools, equipment, and training to perform the required maintenance described above. This information is NOT intended for 'do-it-yourselfers', and you should not assume that this information applies to your equipment. If you have any questions regarding this information please visit our website at www.prestolite.com, or contact our technical service department at: