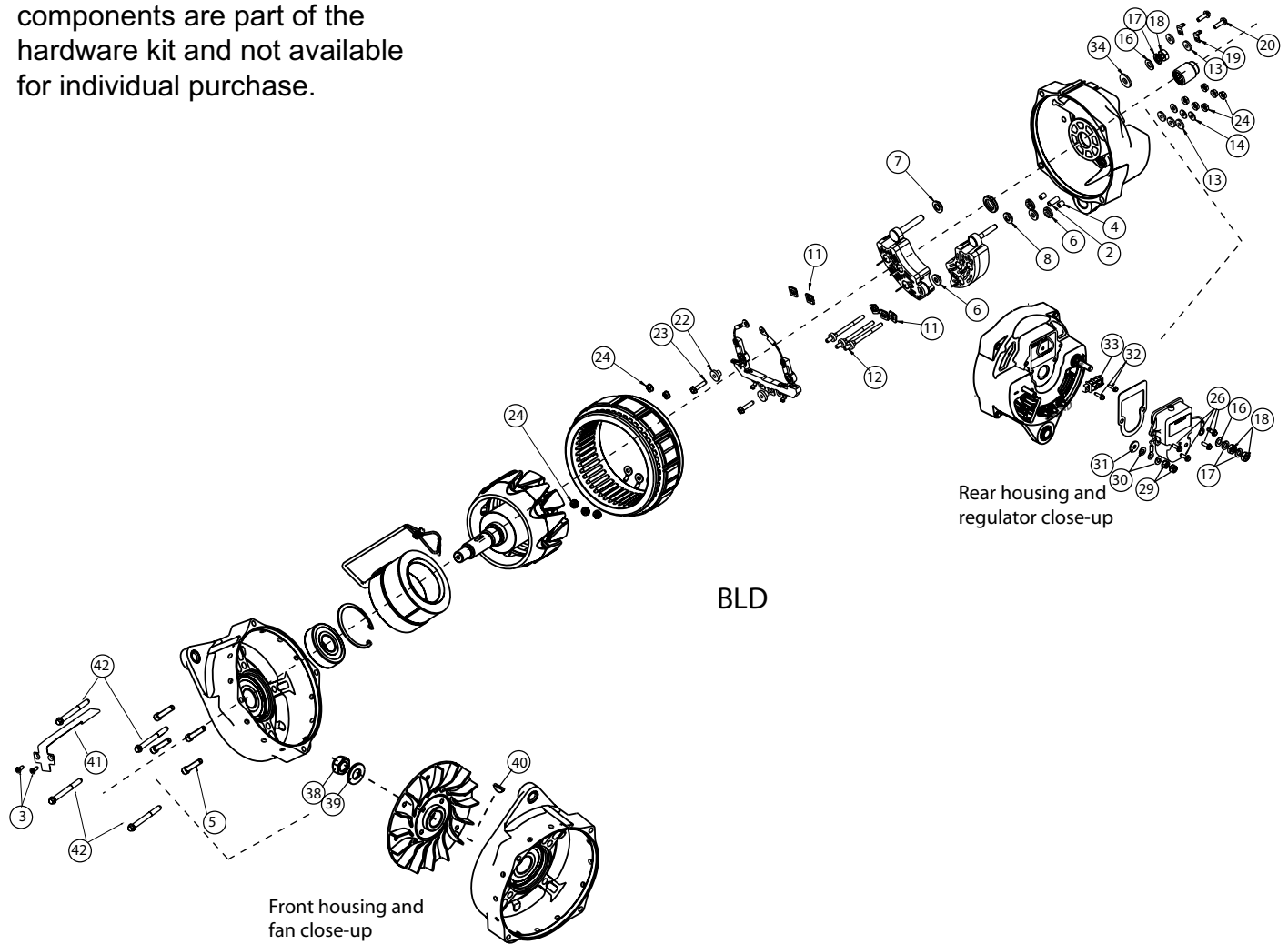


Source: Leece-Neville Heavy Duty Systems Division -  
 Arcade, NY USA  
 Date: February 22, 2007  
 Subject: Hardware service kits K212104266S  
 Bulletin No: TSB-3003  
 Models: BLD series alternators

Technical Service  
 Bulletin

NOTE: All of these components are part of the hardware kit and not available for individual purchase.



**Important:** The information contained in this bulletin is intended for use by trained, professional technicians who have the proper tools, equipment, and training to perform the required maintenance described above. This information is NOT intended for 'do-it-yourselfers', and you should not assume that this information applies to your equipment. If you have any questions regarding this information please visit our website at [www.prestolite.com](http://www.prestolite.com), or contact our technical service department at:

Bulletin No.: TSB-3003

# Technical Service Bulletin

NOTE: All of these components are part of the hardware kit and not available for individual purchase.

Description.	Qty.	Key	Where used
INSULATOR SLEEVE	1	2	Black, center AC tap. Insulate AC tap from housing and rectifier.
SCREW, #8-32X.5 -FLAT	2	3	Attaches external field wire cover to front housing.
INSULATOR SLEEVE	2	4	Clear, two outer AC taps. Insulate AC taps from rear housing.
SCREW,SH-CAP,1/4X1-1/8	4	5	Attaches field coil to front housing.
WSHR INSL #10 BOLT	4	6	4 used AC taps rear rectifier internal.
WSHR INSL 5/16.09THX.8	1	7	Internal red positive post insulator
WSHR INSL 1/4 BOLT	1	8	Internal negative post insulator
INSULATOR	5	11	3 internal between lead frame and rectifier. 2 internal at outmost AC taps between rectifier and lead frame
AC TAPS	3	12	AC taps
WSHR INSL #10.09THX9/1	5	13	Fiber washer insulator on external 3 AC taps and 2 internal on the lead frame
FLAT WASHER	3	14	Flat washer AC tap
WSHR FLT .328-.625-	2	16	External positive post flat washer
WSHR LCK 5/16 MD SPT	3	17	Positive post lock washer
NUT 5/16-24X9/16X7/32	3	18	Positive post nuts
RING TERMINAL - 1/4	2	19	Male spade turn on terminals
SCREW, MACH. 10-24X.63	2	20	Attaches lead from terminals
BUSHING	2	22	Internal lead frame turn on leads
SCREW,MACH-10-24X.63	2	23	Used to attached turn on leads to rectifier.
NUT CON LOCK 10-24-1/8	11	24	3 stator to AC taps internal, 6 external AC taps, 2 internal behind regulator attaches AC turn on spades
SCR TPG 10-32X.62 1/4H	4	26	4 Used to mount regulator to rear housing,
NUT CONL 1/4-28 3/16TK	2	29	External negative post nuts
WSHR FLT .266-.562-	2	30	External negative post flat washer
WSHR INSL 1/4.09THX3/4	1	31	External negative post insulator washer
SCREW, TAP #8-32 X 5/8	2	32	Attaches black terminal block to rear housing
TERMINAL BLOCK	1	33	Internal junction point for regulator and field coil
WSHR INSL 5/16 BOLT	1	34	External positive post insulator
5/8-18NF-2B PULLEY LCK	1	38	Pulley Nut
WASHER FLAT	1	39	Pulley nut flat washer
KEY, WOODRUFF #8	1	40	Rotor Shaft at Pulley
COVER, W.SHIELD-BLP	1	41	External. Cover to protect field coil wires.
THRU-BOLT 1/4-20 3.50L	4	42	Through Bolts (External end frames)

**Important:** The information contained in this bulletin is intended for use by trained, professional technicians who have the proper tools, equipment, and training to perform the required maintenance described above. This information is NOT intended for 'do-it-yourselfers', and you should not assume that this information applies to your equipment. If you have any questions regarding this information please visit our website at [www.prestolite.com](http://www.prestolite.com), or contact our technical service department at: